





2017 2nd Half Opener

July 29 - 30, 2017

2nd Amendment to the Sailing Instructions, 07/28/17

SI's 5.1 and 6.1 should read as follows:

5 Saturday Courses

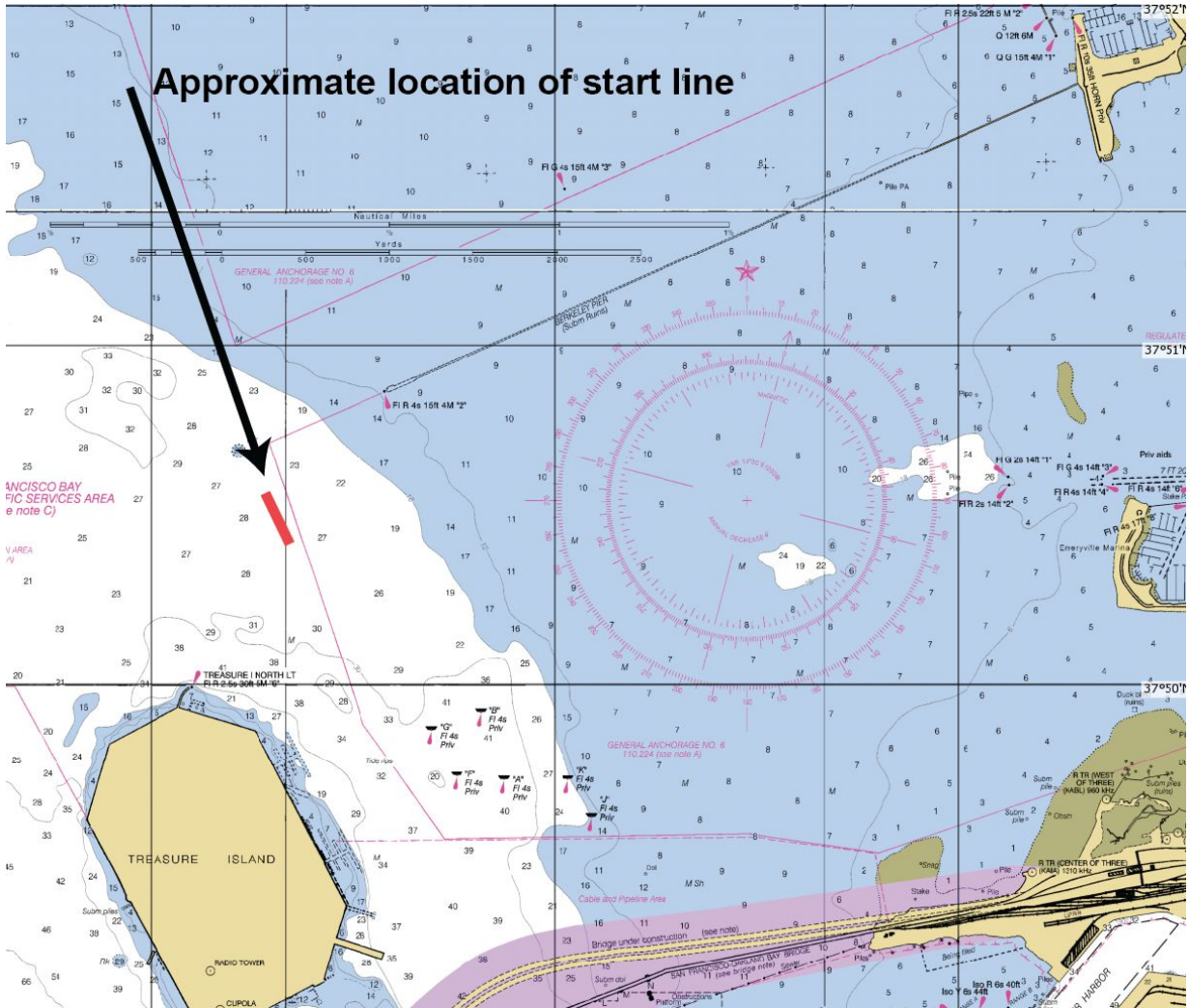
5.1	Course 1		Start	Point Bonita (PB)			Finish	22nm
	Course 2		Start	YRA 17 (S)	D	TI (P)	Finish	18nm

6 Saturday Marks

6.1	YRA 17	RG "HR" FI (2 +1) R 6s - Harding Rock
	D	FI G 4s 15ft 4M "3" on Olympic Circle
	PB	Point Bonita RG FI (2+1) R 6s BELL (ocn)
	TI	Treasure Island and Yerba Buena Island

7 Start Line

7.1 SATURDAY- The start line will be between an orange temporary YC buoy, and an Orange Flag on the Committee boat. The start line will be located approx .5 nm west of the Berkeley Pier. The first warning is at 1055 hrs. Saturday fleet divisions and start times will be listed in Attachment 1.



Approximate location of start line

SAN FRANCISCO BAY
VIC SERVICES AREA
(see note C)

V AREA
A)

TREASURE ISLAND NORTH LT
Fl R 2.5s 30M 4M 4"

Fl 4s
Priv

Fl 4s
Priv

Fl 4s
Priv

Fl 4s
Priv

Fl 4s
Priv

Fl 4s
Priv

Fl 4s
Priv

Fl 4s
Priv

Fl 4s
Priv

Fl 4s
Priv

Fl 4s
Priv

Fl 4s
Priv

Fl 4s
Priv

Fl 4s
Priv

Fl 4s
Priv

Fl 4s
Priv

Fl 4s
Priv

Fl 4s
Priv

Fl 4s
Priv

Fl 4s
Priv

GENERAL ANCHORAGE NO. 6
110.224 (see note A)

GENERAL ANCHORAGE NO. 6
110.224 (see note A)

GENERAL ANCHORAGE NO. 6
110.224 (see note A)

GENERAL ANCHORAGE NO. 6
110.224 (see note A)

GENERAL ANCHORAGE NO. 6
110.224 (see note A)

GENERAL ANCHORAGE NO. 6
110.224 (see note A)

GENERAL ANCHORAGE NO. 6
110.224 (see note A)

GENERAL ANCHORAGE NO. 6
110.224 (see note A)

GENERAL ANCHORAGE NO. 6
110.224 (see note A)

GENERAL ANCHORAGE NO. 6
110.224 (see note A)

GENERAL ANCHORAGE NO. 6
110.224 (see note A)

GENERAL ANCHORAGE NO. 6
110.224 (see note A)

GENERAL ANCHORAGE NO. 6
110.224 (see note A)

GENERAL ANCHORAGE NO. 6
110.224 (see note A)

GENERAL ANCHORAGE NO. 6
110.224 (see note A)

GENERAL ANCHORAGE NO. 6
110.224 (see note A)

GENERAL ANCHORAGE NO. 6
110.224 (see note A)

GENERAL ANCHORAGE NO. 6
110.224 (see note A)

GENERAL ANCHORAGE NO. 6
110.224 (see note A)

GENERAL ANCHORAGE NO. 6
110.224 (see note A)

Fl 4s 15ft 4M 3"

Fl 4s 15ft 4M 3"

Fl 4s 15ft 4M 3"

Fl 4s 15ft 4M 3"

Fl 4s 15ft 4M 3"

Fl 4s 15ft 4M 3"

Fl 4s 15ft 4M 3"

Fl 4s 15ft 4M 3"

Fl 4s 15ft 4M 3"

Fl 4s 15ft 4M 3"

Fl 4s 15ft 4M 3"

Fl 4s 15ft 4M 3"

Fl 4s 15ft 4M 3"

Fl 4s 15ft 4M 3"

Fl 4s 15ft 4M 3"

Fl 4s 15ft 4M 3"

Fl 4s 15ft 4M 3"

Fl 4s 15ft 4M 3"

Fl 4s 15ft 4M 3"

Fl 4s 15ft 4M 3"

Fl 4s 15ft 4M 3"

Fl 4s 15ft 4M 3"

Fl 4s 15ft 4M 3"

Fl 4s 15ft 4M 3"

Fl 4s 15ft 4M 3"

Fl 4s 15ft 4M 3"

Fl 4s 15ft 4M 3"

Fl 4s 15ft 4M 3"

Fl 4s 15ft 4M 3"

Fl 4s 15ft 4M 3"

Fl 4s 15ft 4M 3"

Fl 4s 15ft 4M 3"

Fl 4s 15ft 4M 3"

Fl 4s 15ft 4M 3"

Fl 4s 15ft 4M 3"

Fl 4s 15ft 4M 3"

Fl 4s 15ft 4M 3"

Fl 4s 15ft 4M 3"

Fl 4s 15ft 4M 3"

Fl 4s 15ft 4M 3"

Fl 4s 15ft 4M 3"

Fl 4s 15ft 4M 3"

Fl 4s 15ft 4M 3"

Fl 4s 15ft 4M 3"

Fl 4s 15ft 4M 3"

Fl 4s 15ft 4M 3"

Fl 4s 15ft 4M 3"

Fl 4s 15ft 4M 3"

Fl 4s 15ft 4M 3"

Fl 4s 15ft 4M 3"

Fl 4s 15ft 4M 3"

Fl 4s 15ft 4M 3"

Fl 4s 15ft 4M 3"

Fl 4s 15ft 4M 3"

Fl 4s 15ft 4M 3"

Fl 4s 15ft 4M 3"

Fl 4s 15ft 4M 3"

Fl 4s 15ft 4M 3"

Fl 4s 15ft 4M 3"

Fl 4s 15ft 4M 3"

Fl 4s 15ft 4M 3"

Fl 4s 15ft 4M 3"

Fl 4s 15ft 4M 3"

Fl 4s 15ft 4M 3"

Fl 4s 15ft 4M 3"

Fl 4s 15ft 4M 3"

Fl 4s 15ft 4M 3"

Fl 4s 15ft 4M 3"

Fl 4s 15ft 4M 3"

Fl 4s 15ft 4M 3"

Fl 4s 15ft 4M 3"

Fl 4s 15ft 4M 3"

Fl 4s 15ft 4M 3"

Fl 4s 15ft 4M 3"

Fl 4s 15ft 4M 3"

Fl 4s 15ft 4M 3"

Fl 4s 15ft 4M 3"

Fl 4s 15ft 4M 3"

Fl 4s 15ft 4M 3"

Fl 4s 15ft 4M 3"