





2018 Encinal Regatta

July 28, 29th

Attachment 1 - Courses

Saturday Courses

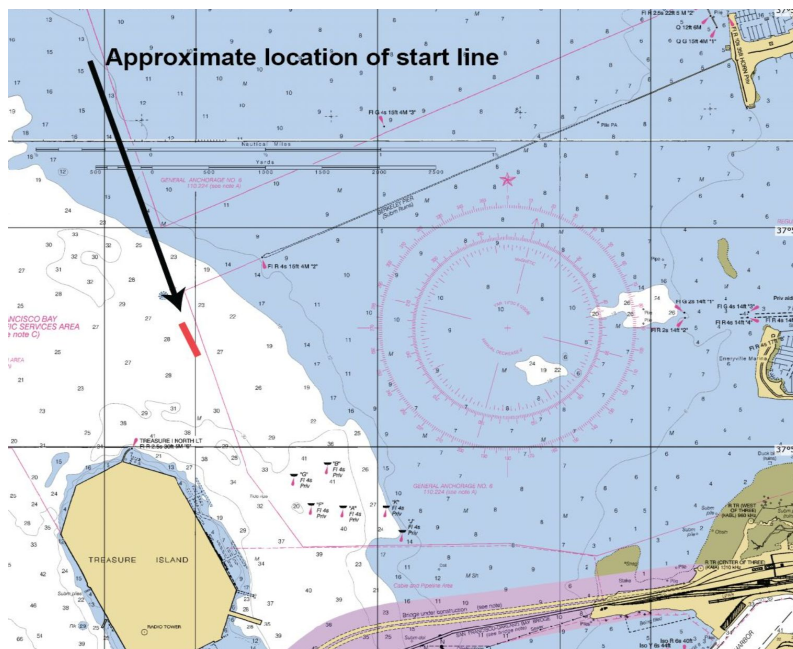
Course 1		Point Bonita, PB (p)			Finish	22 miles
Course 2		YRA 17 (s)	D (s)	TI (p)	Finish	18nm

Saturday Marks






YRA 17	RG "HR" FI (2 +1) R 6s - Harding Rock
D	FI G 4s 15ft 4M "3" on Olympic Circle
PB	Point Bonita RG FI (2+1) R 6s BELL (ocn)
TI	Treasure Island and Yerba Buena Island

Saturday Start Line

The start line will be between an orange temporary YC buoy, and an Orange Flag on the Committee boat. The start line will be located approx .5 nm west of the Berkeley Pier. The first warning is at 1055 hrs. Saturday fleet divisions and start times will be listed in Attachment 2.



Sunday Courses

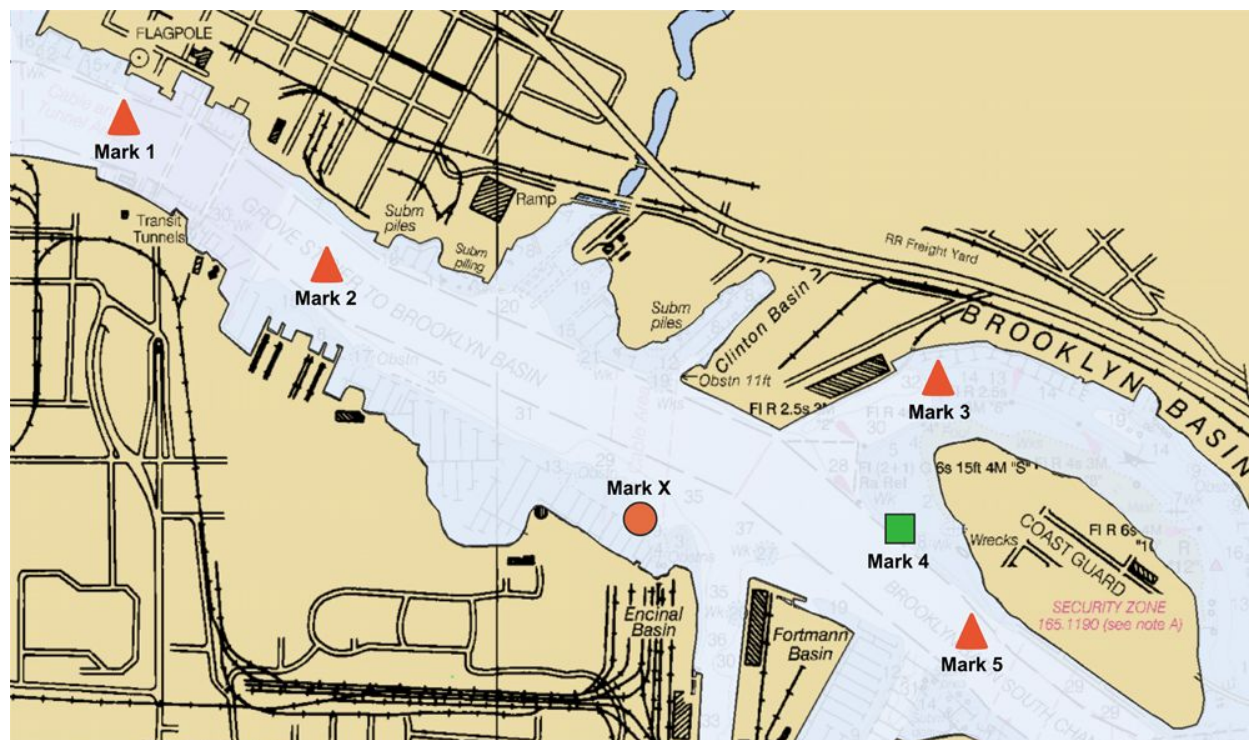
	Course 1	1s 5s Xs 2s 5s Finish
	Course 2	2s 5s Xs 2s 5s Finish
	Course 3	1s 3s 4p 5s Xs 2s 5s Finish
	Course 4	5p 1p Xp 5p 2p Finish
	Course 5	5p 2p Xp 5p 2p Finish

Sunday Start Line

The Start/Finish line will be between an orange flag on the committee boat, which will be stationed at the end of the Encinal Guest Dock, and Mark X, an orange temporary YC buoy northeast of the committee boat.

Sunday Marks

X	X is the pin end of the starting line and also a mark of the course. X is to be rounded to starboard when heading from the leeward mark to the weather mark.
1	An orange inflatable temporary buoy.
2	An orange inflatable temporary buoy.
3	An orange inflatable temporary buoy.
4	Dy mark G-1, west of Coast Guard Island.
5	An orange inflatable temporary buoy.



NOTES

- 1 Start / Finish Line is between an orange panel on the RC boat and Mark X.
- 2 Mark placement may vary from race to race due to weather and tide conditions.